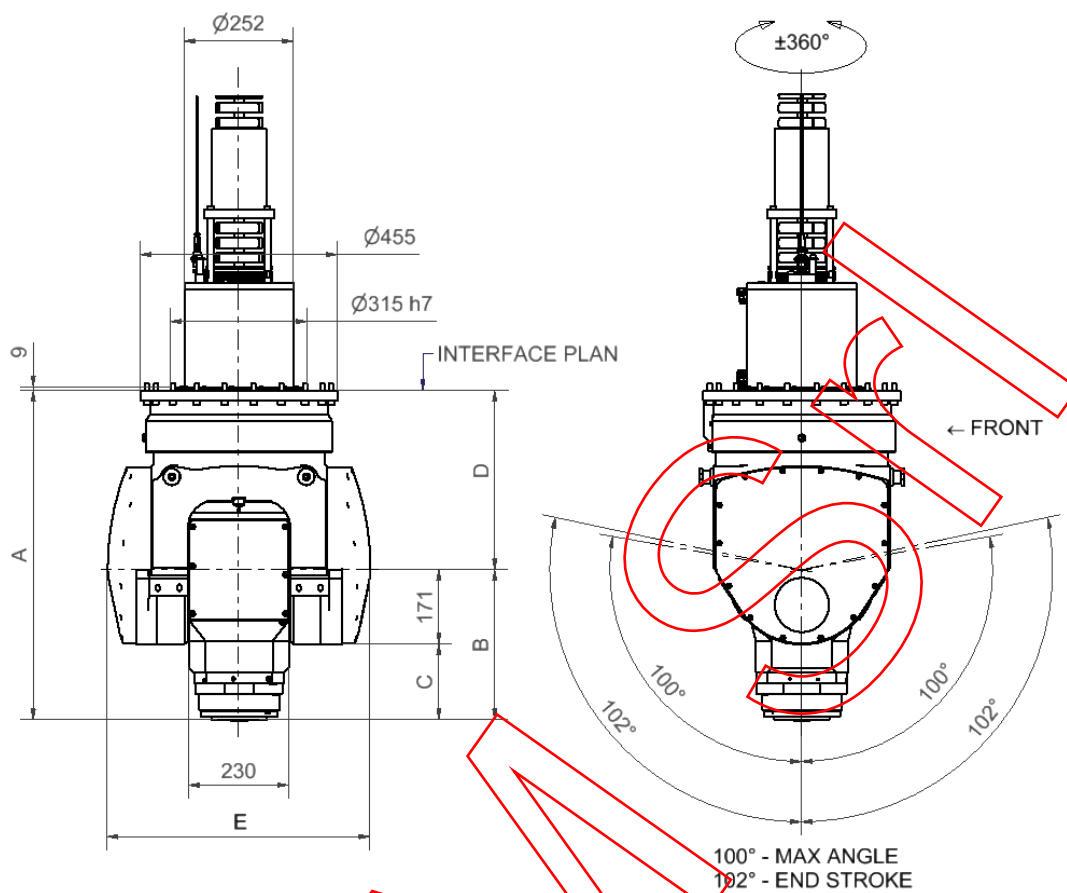


**K2A**

TECHNICAL DATA		A-AXIS	C-AXIS
Maximum speed	°/sec	200	200
Continuous torque	Nm	736	812
Intermittent torque	Nm	1068	1156
Peak torque	Nm	1422	1396
Clamping torque	Nm	5000	5000
Hydraulic clamp rated pressure (max)	bar	100 (120)	60 (80)
Accuracy	arcsec	+/- 10"	+/- 10"
Overall mass	Kg	450	

**K2B**

TECHNICAL DATA		A-AXIS	C-AXIS
Maximum speed	Rpm	50	50
Continuous torque	Nm	504	533
Intermittent torque	Nm	732	761
Peak torque	Nm	998	935
Clamping torque	Nm	5000	5000
Hydraulic clamp rated pressure (max)	bar	100 (120)	60 (80)
Accuracy	arcsec	+/- 10"	+/- 10"
Overall mass	Kg	460	



TECHNICAL DATA		SPINDLE	
Tool type		HSK A63	HSK A100
Maximum spindle speed	Rpm	24000	15000
Power S1 100% (S6 40%)	Kw	42 (55)	50 (67)
Torque S1 100% (S6 40%)	Nm	67 (87)	95 (124)
Bearings lubrication type	Nm	Oil/Air	Oil/Air
Spindle manufacturer/model		HSD ES510	HSD ES510

ELECTROSPINDLE TYPE				
DIMENSION	HSK A63 S version	HSK A63 L version	HSK A100 S version	HSK A100 L version
A	722	722	757	757
B	310	370	295	345
C	89	139	124	174
D	412	352	462	412

HEAD SIZE		
DIMENSION	K2A	K2B
E	650	610

We are available to supply special versions.